

Appendix 2 – Relevant Maps and Figures

New High School for Medowie

Version History

Version	Date	Description	Prepared by	Approved by
1	07/02/25	Final version for exhibition	Gyde Consulting	Mel Krzus, Director

Acknowledgement of Country

The NSW Department of Education acknowledges the Worimi people, the traditional custodians of the land on which the New High School for Medowie is proposed.

We pay our respects to their Elders past and present and celebrate the diversity of Aboriginal people and their ongoing cultures and connections to the lands and waters of Australia.

The NSW Department of Education is committed to honouring Aboriginal peoples' cultural and spiritual connections to the land, waters and seas and their rich contribution to society.

The NSW Department of Education recognises that by acknowledging our past, we are laying the groundwork for a future that embraces all Australians; a future based on mutual respect and shared responsibility.

Figures

Figure 1	Flood prone land, site outlined in red (Map source: Port Stephens Council Mapping Portal)	4
Figure 2	Drinking Water Catchment Mapping (Map source: NSW Planning Portal Spatial Viewer)	4
Figure 3	Transmission line traversing the northwestern corner of the site – site outlined in yellow dashed line (Map source: LUAL V2)	5
Figure 4	Survey Plan (Source: SDG)	5
Figure 5	AHIMS search within the vicinity of the site (Map source: Biosis)	6
Figure 6	EPI Aboriginal Cultural Significance Mapping (Map source: NSW Planning Portal Spatial Viewer)	7
Figure 7	Search results confirming no Native Title Claims apply to the site (Map source: National Native Title Tribunal mapping tool)	7
Figure 8	Heritage items in the vicinity of the subject site (Map source: NSW Planning Portal Spatial Viewer)	8
Figure 9	Acid sulfate soil mapping affecting the site (Map source: NSW Planning Portal Spatial Viewer)	8
Figure 10	Bushfire prone land mapping (Map source: NSW Planning Portal Spatial Viewer)	9
Figure 11	Confirmation of Bushfire Prone Land (Source: Bushfire Protection Assessment prepared by Ecological Australia)	10
Figure 12	Bushfire hazard assessment map (Map source: Ecological Australia)	11
Figure 13	Obstacle Limitation Surface Mapping (Map source: Port Stephens Council Mapping Portal)	12
Figure 14	Bird strike zone mapping (Map source: Port Stephens DCP 2014)	12
Figure 15	Identification of vegetation (in particular PCT 3995 – Hunter Coast Paperbark-Swamp Mahogany Forest) and plant community types on the site (Map source: Water Technology)	13
Figure 16	Koala habitat mapping showing Preferred Koala Habitat' and 'Preferred Koala Habitat Buffer Over Other Vegetation' koala habitats on the site (Map source: Port Stephens Council Mapping Portal/Water Technology)	13
Figure 17	Koala Vegetation Mapping showing vegetation types across the site and surrounding areas (Source: Water Technology)	14
Figure 18	Biodiversity Values mapping (Map source: Water Technology)	15
Figure 19	Road network classification (Source: TfNSW Road Network Classifications)	15
Figure 20	Location of bus stops in proximity to the site (Map source: WSP)	16
Figure 21	Hydrography Mapping (Source: SEED)	16

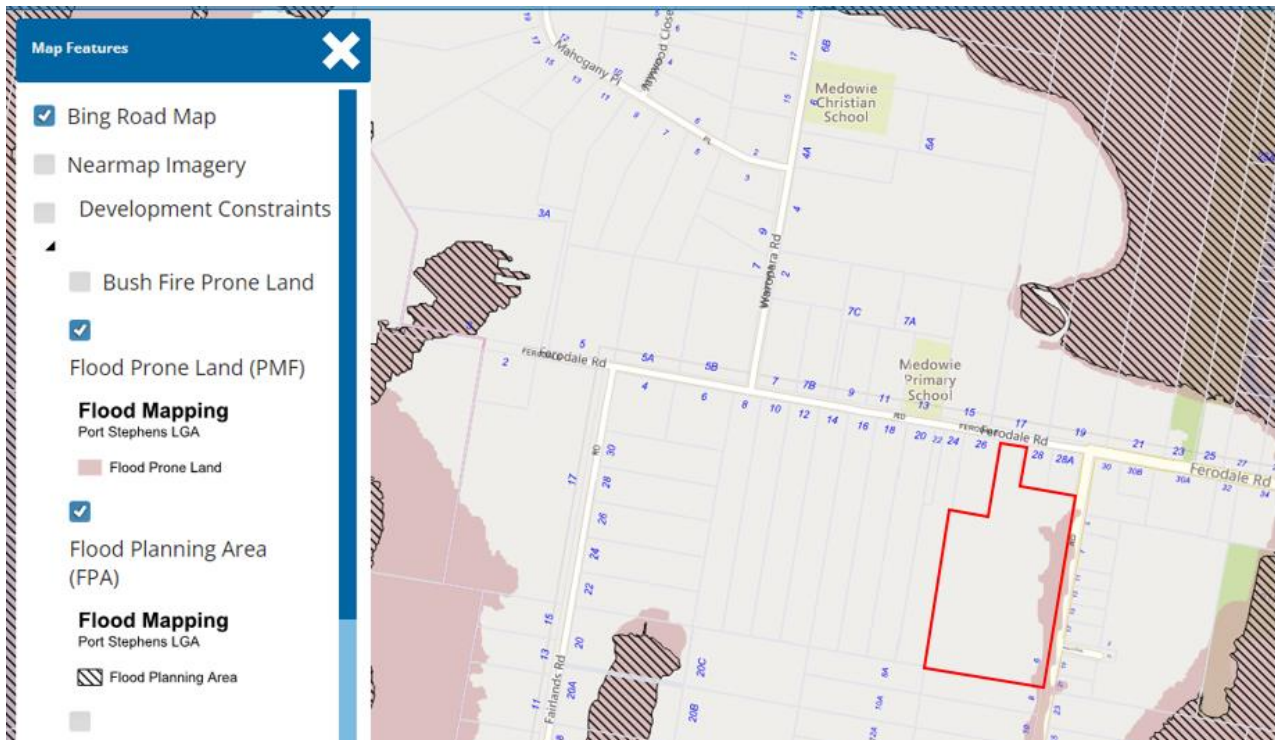


Figure 1 Flood prone land, site outlined in red (Map source: Port Stephens Council Mapping Portal)

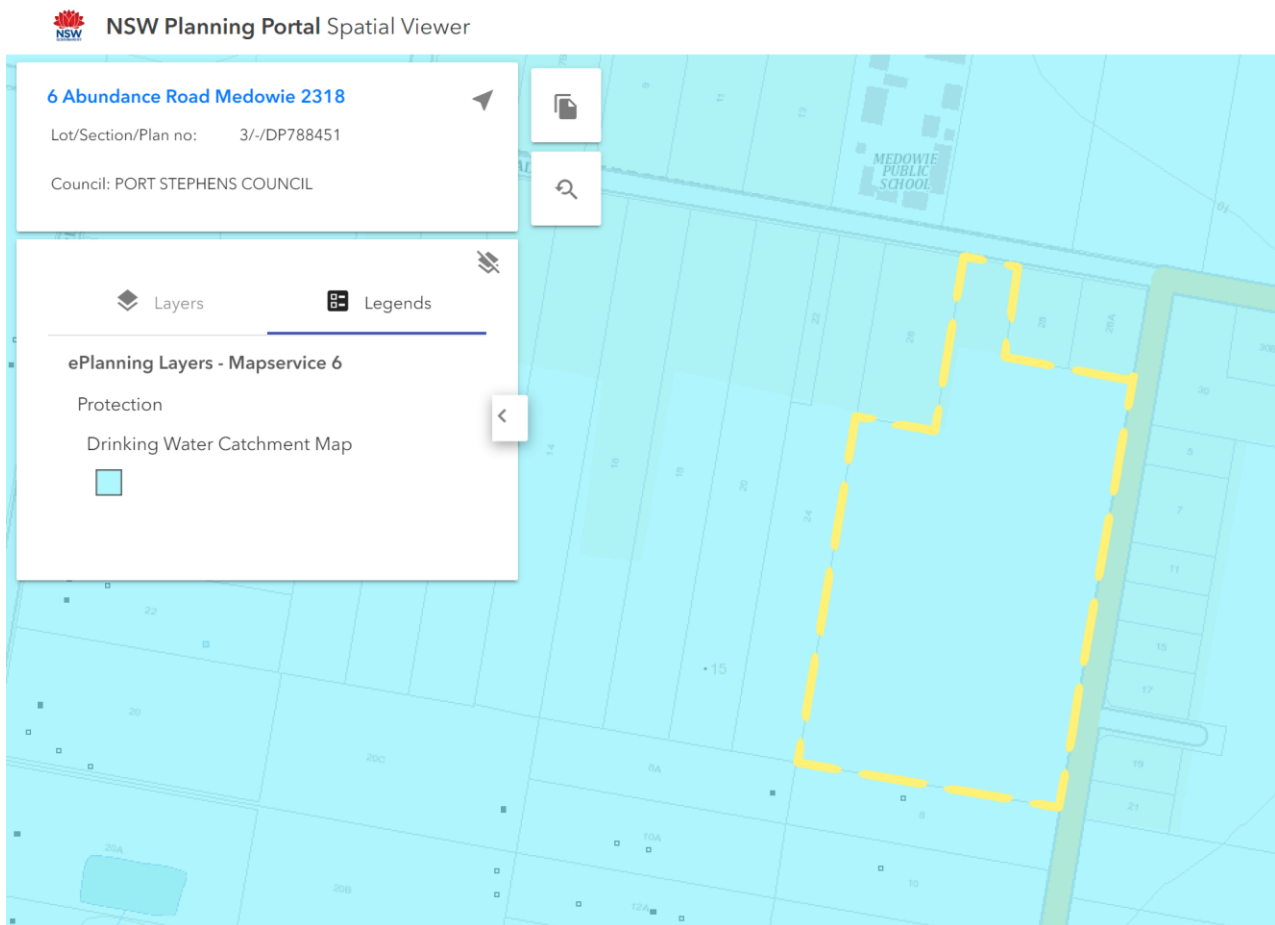


Figure 2 Drinking Water Catchment Mapping (Map source: NSW Planning Portal Spatial Viewer)

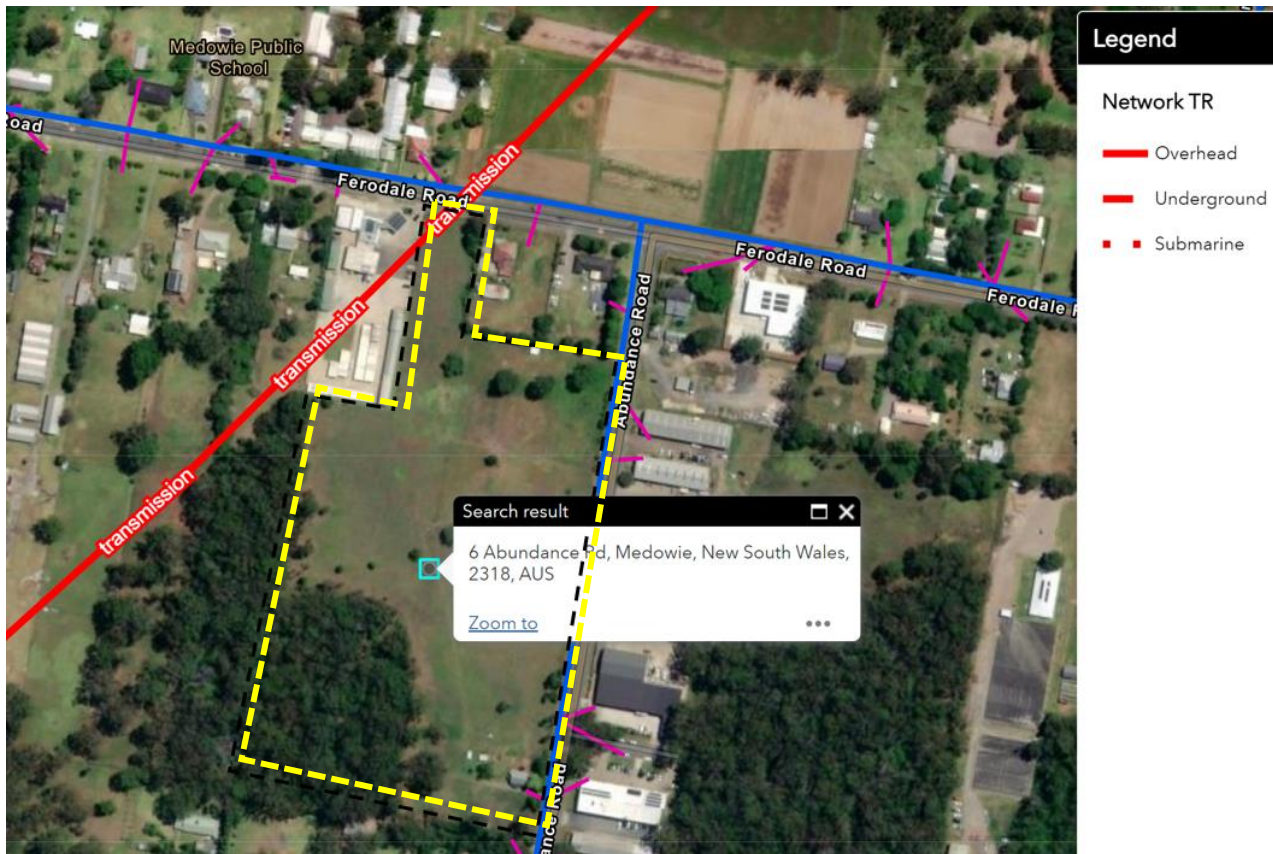


Figure 3 Transmission line traversing the northwestern corner of the site – site outlined in yellow dashed line (Map source: LUAL V2)

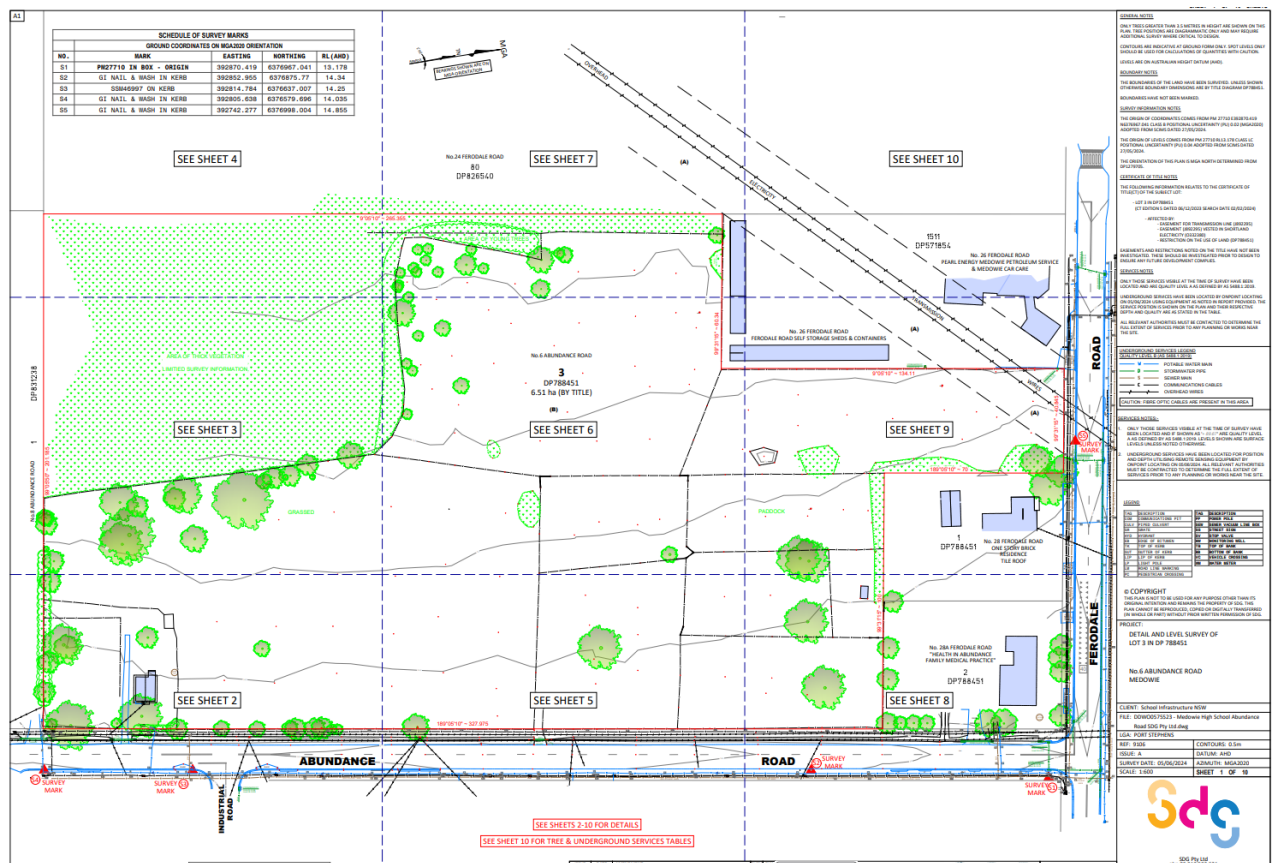


Figure 4 Survey Plan (Source: SDG)

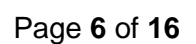




Figure 6 EPI Aboriginal Cultural Significance Mapping (Map source: NSW Planning Portal Spatial Viewer)

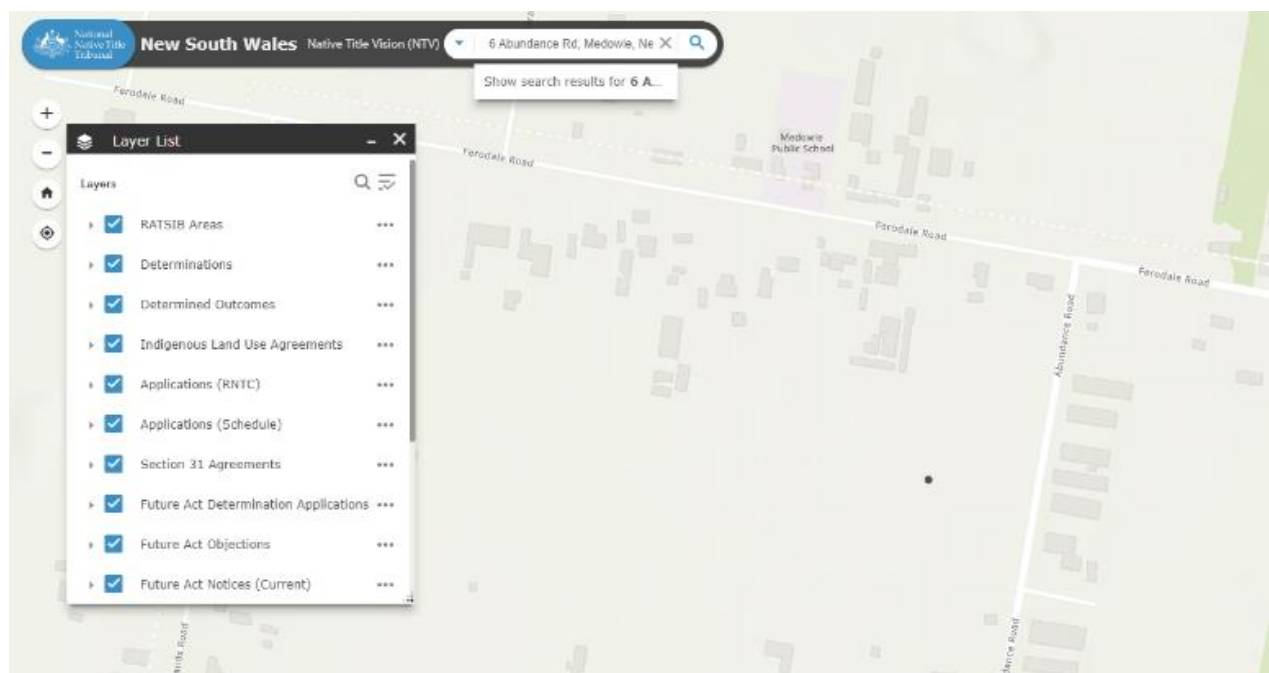


Figure 7 Search results confirming no Native Title Claims apply to the site (Map source: National Native Title Tribunal mapping tool)

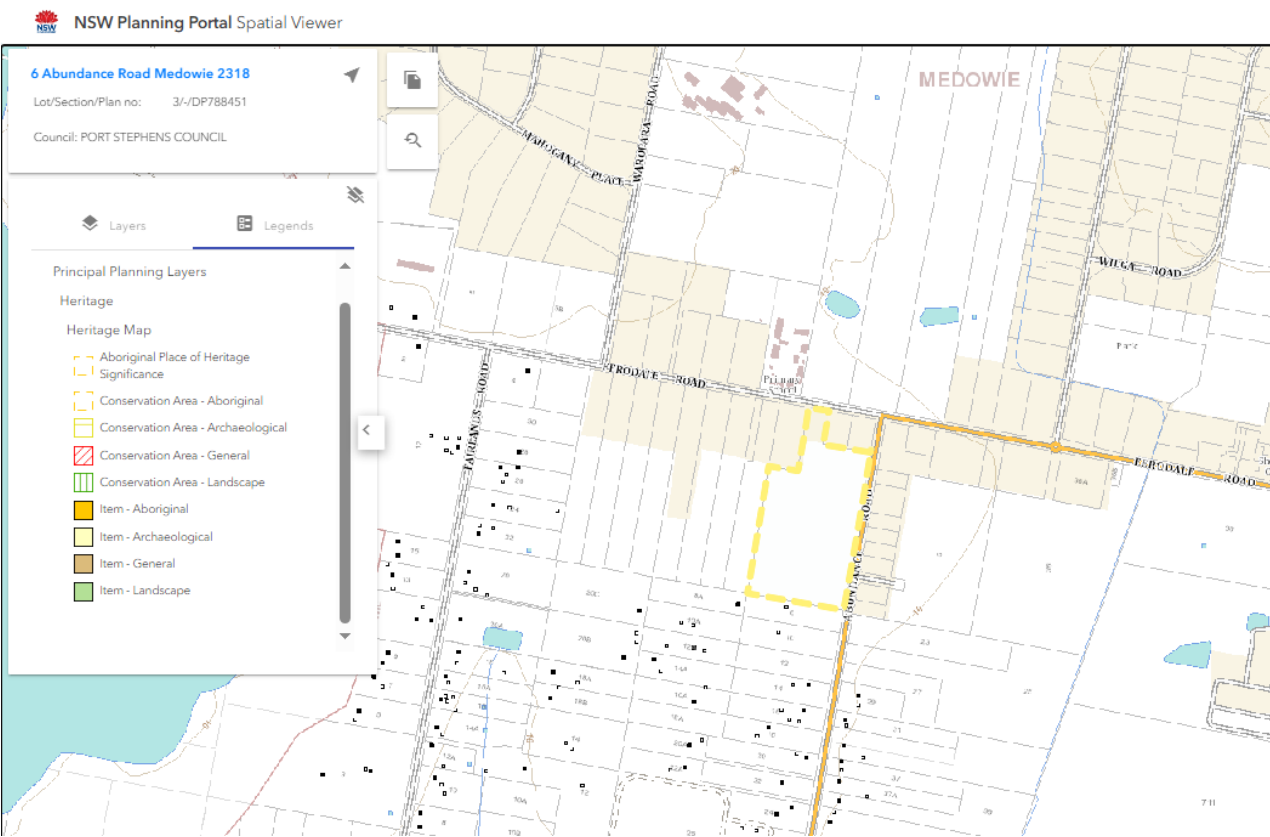


Figure 8 Heritage items in the vicinity of the subject site (Map source: NSW Planning Portal Spatial Viewer)

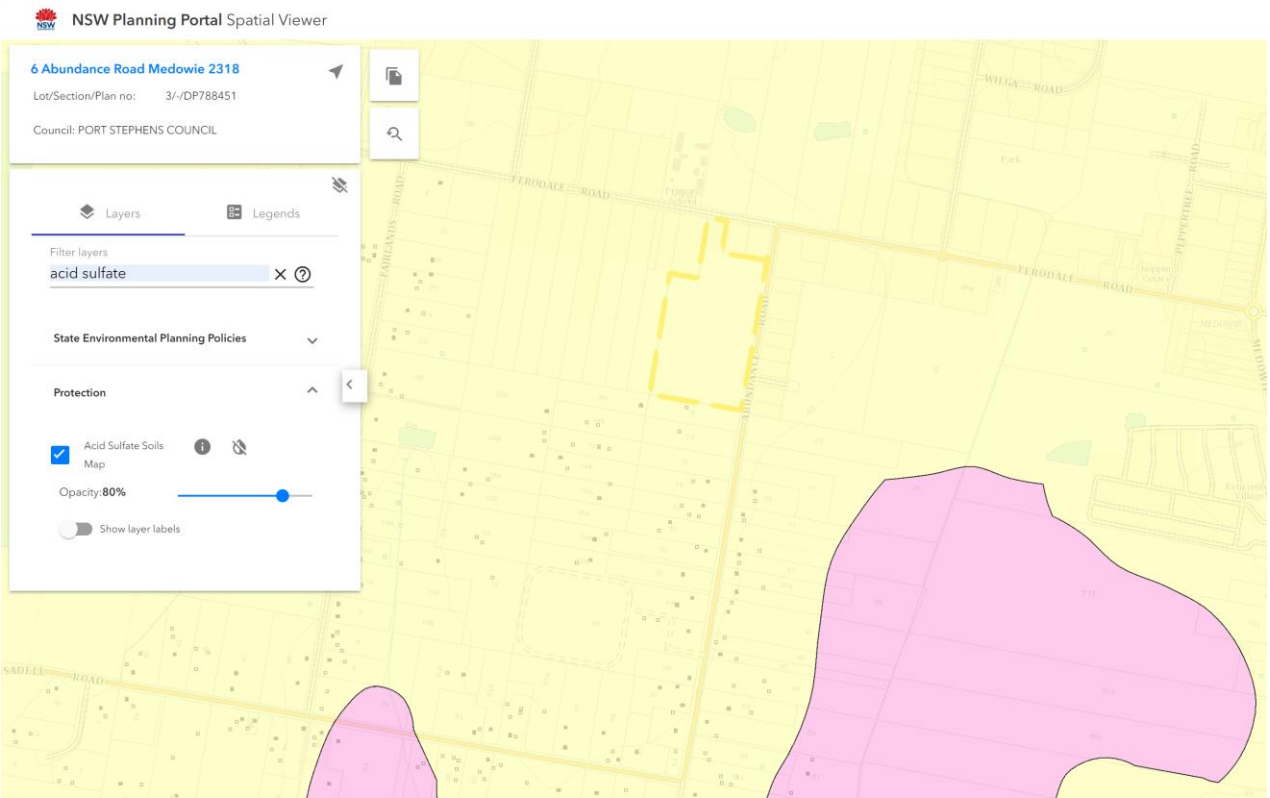


Figure 9 Acid sulfate soil mapping affecting the site (Map source: NSW Planning Portal Spatial Viewer)

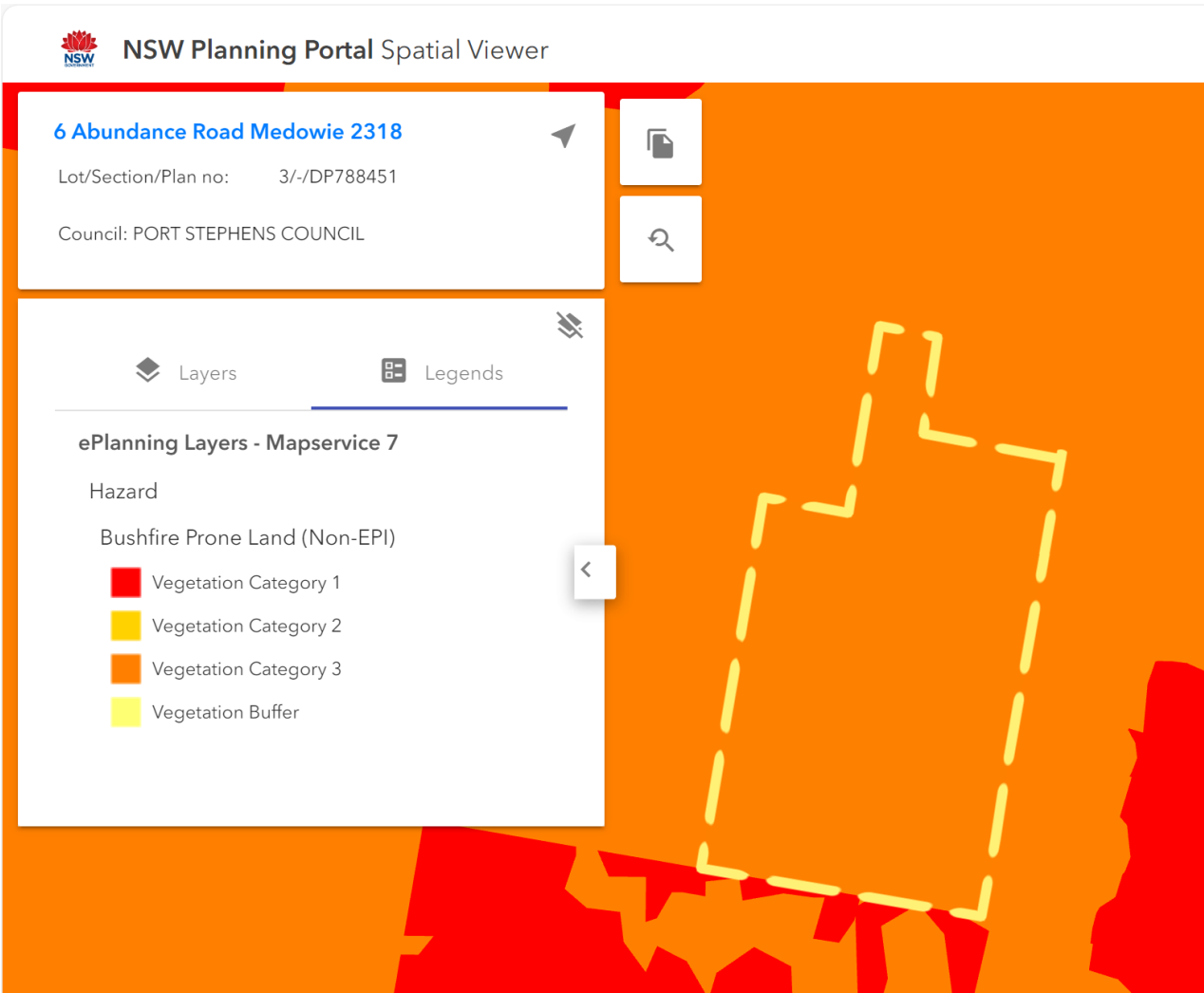


Figure 10 Bushfire prone land mapping (Map source: NSW Planning Portal Spatial Viewer)

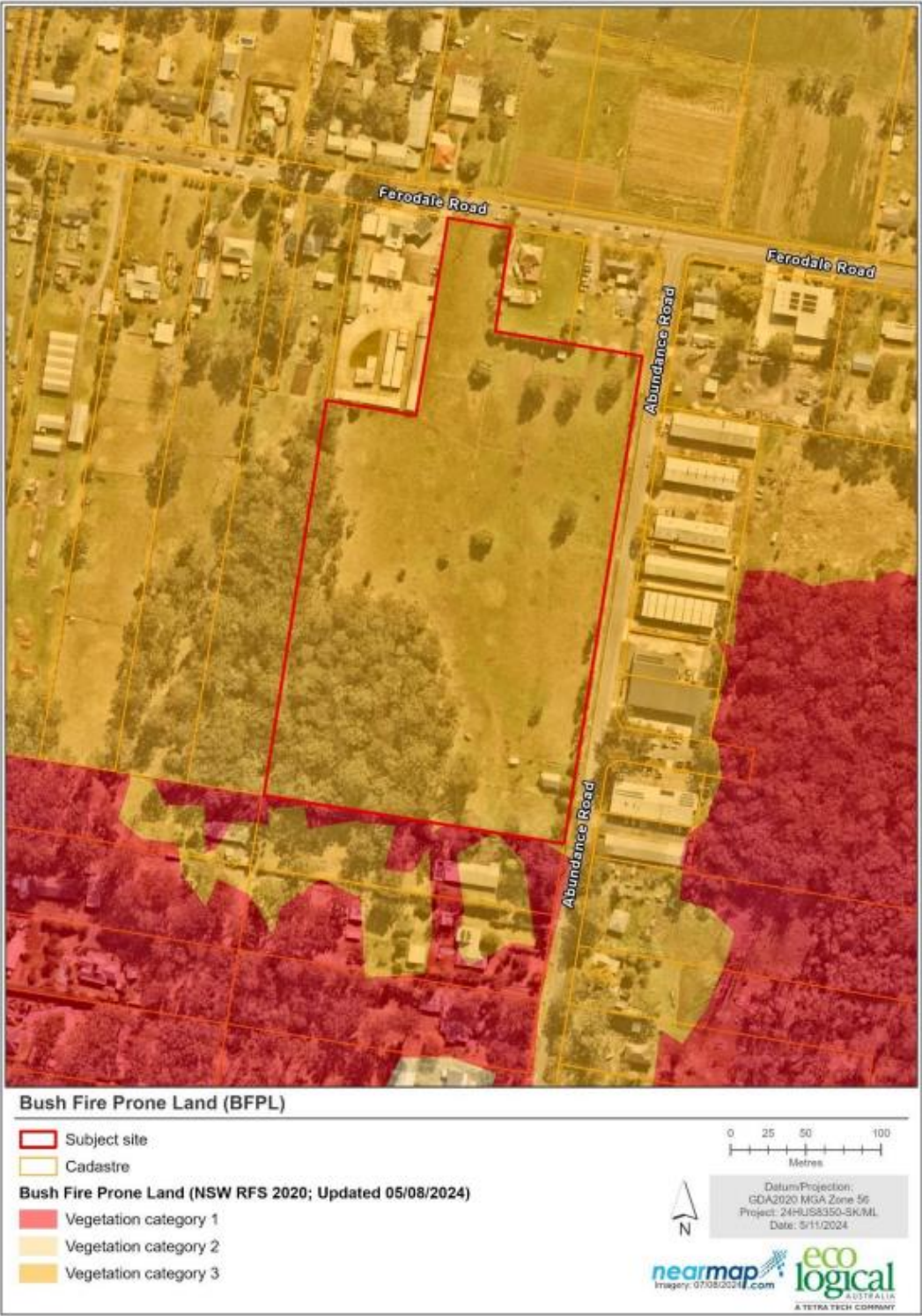


Figure 11 Confirmation of Bushfire Prone Land (Source: Bushfire Protection Assessment prepared by Ecological Australia)

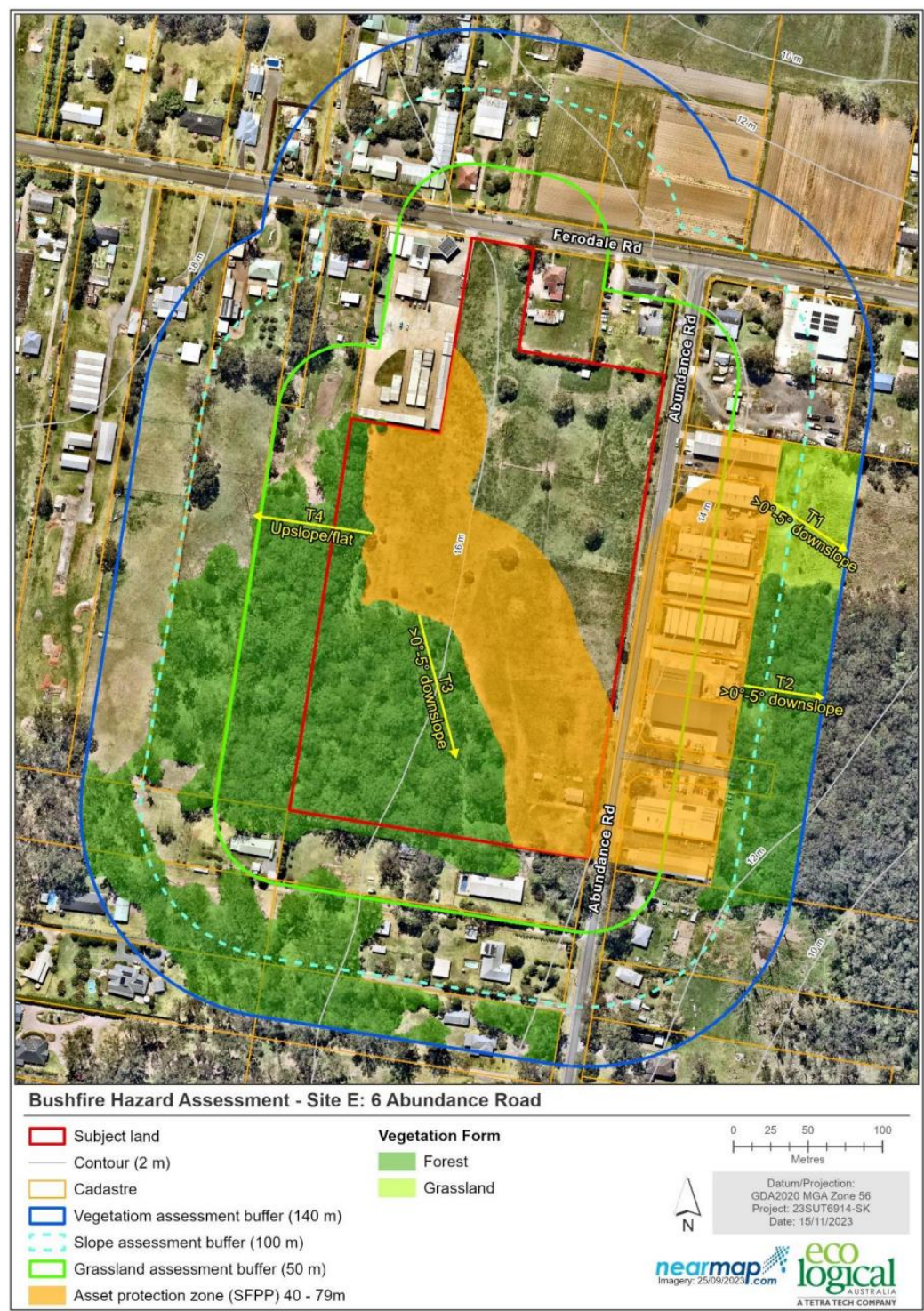


Figure 1: Bushfire Hazard Assessment - Asset Protection Zone

Figure 12 Bushfire hazard assessment map (Map source: Ecological Australia)

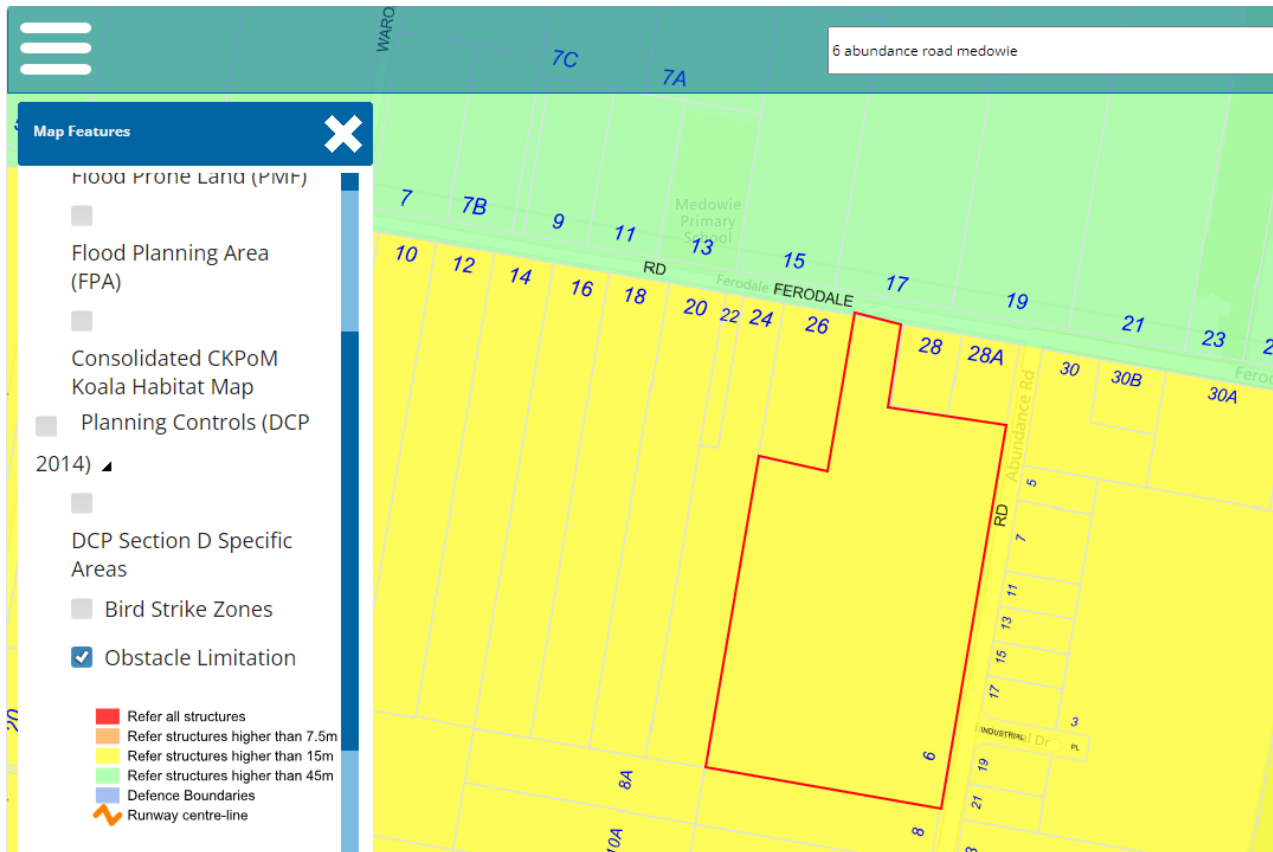


Figure 13 Obstacle Limitation Surface Mapping (Map source: Port Stephens Council Mapping Portal)

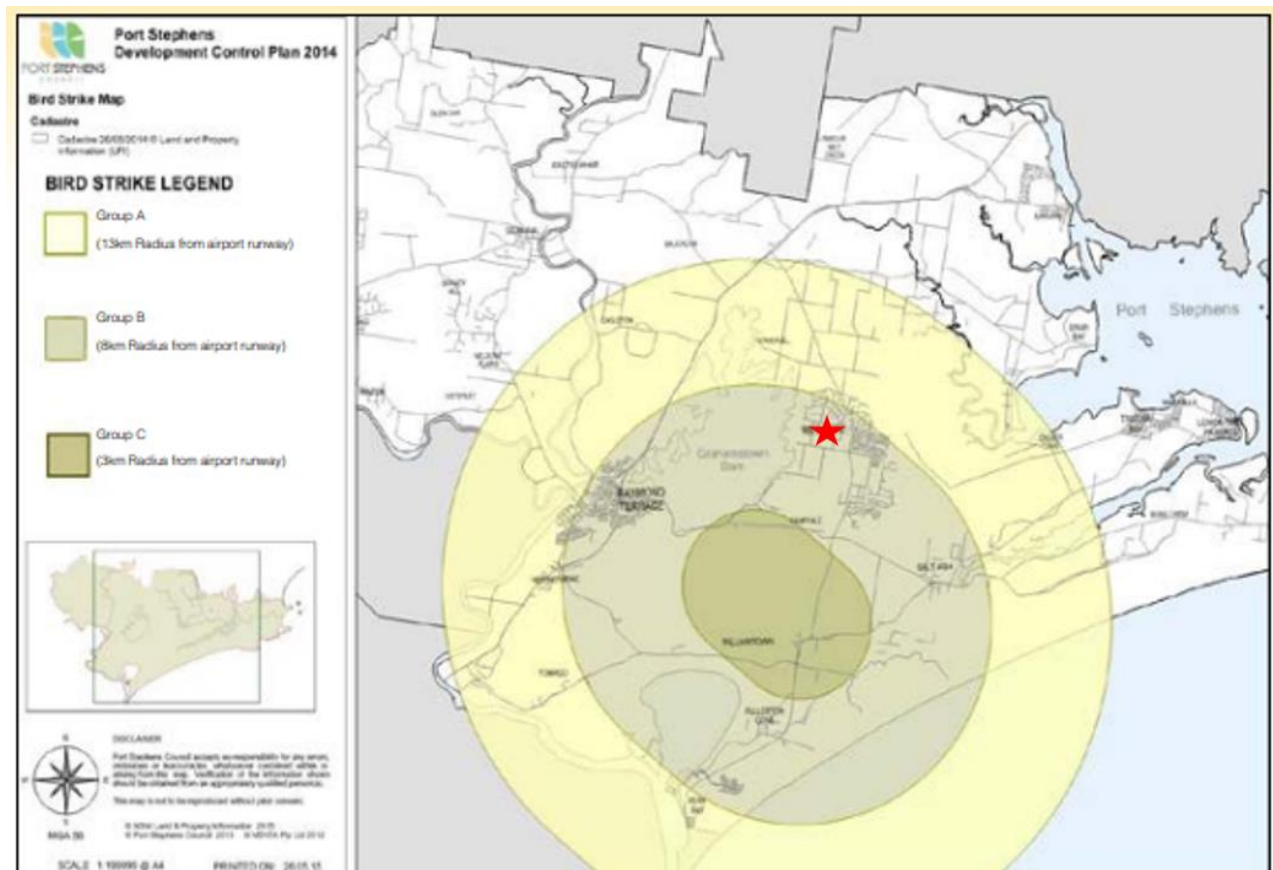


Figure 14 Bird strike zone mapping (Map source: Port Stephens DCP 2014)



Figure 15 Identification of vegetation (in particular PCT 3995 – Hunter Coast Paperbark-Swamp Mahogany Forest) and plant community types on the site (Map source: Water Technology)

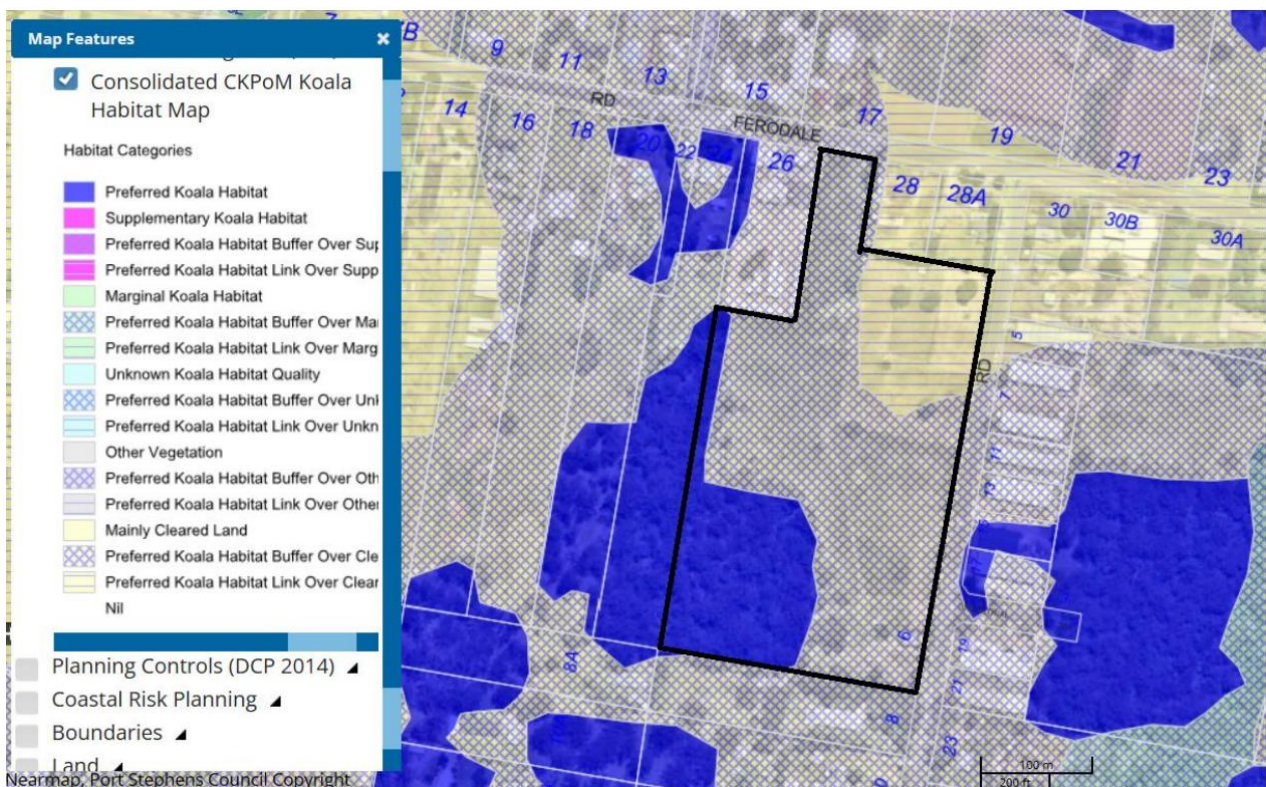


Figure 16 Koala habitat mapping showing Preferred Koala Habitat' and 'Preferred Koala Habitat Buffer Over Other Vegetation' koala habitats on the site (Map source: Port Stephens Council Mapping Portal/Water Technology)



Figure 17 Koala Vegetation Mapping showing vegetation types across the site and surrounding areas (Source: Water Technology)



Figure 18 Biodiversity Values mapping (Map source: Water Technology)

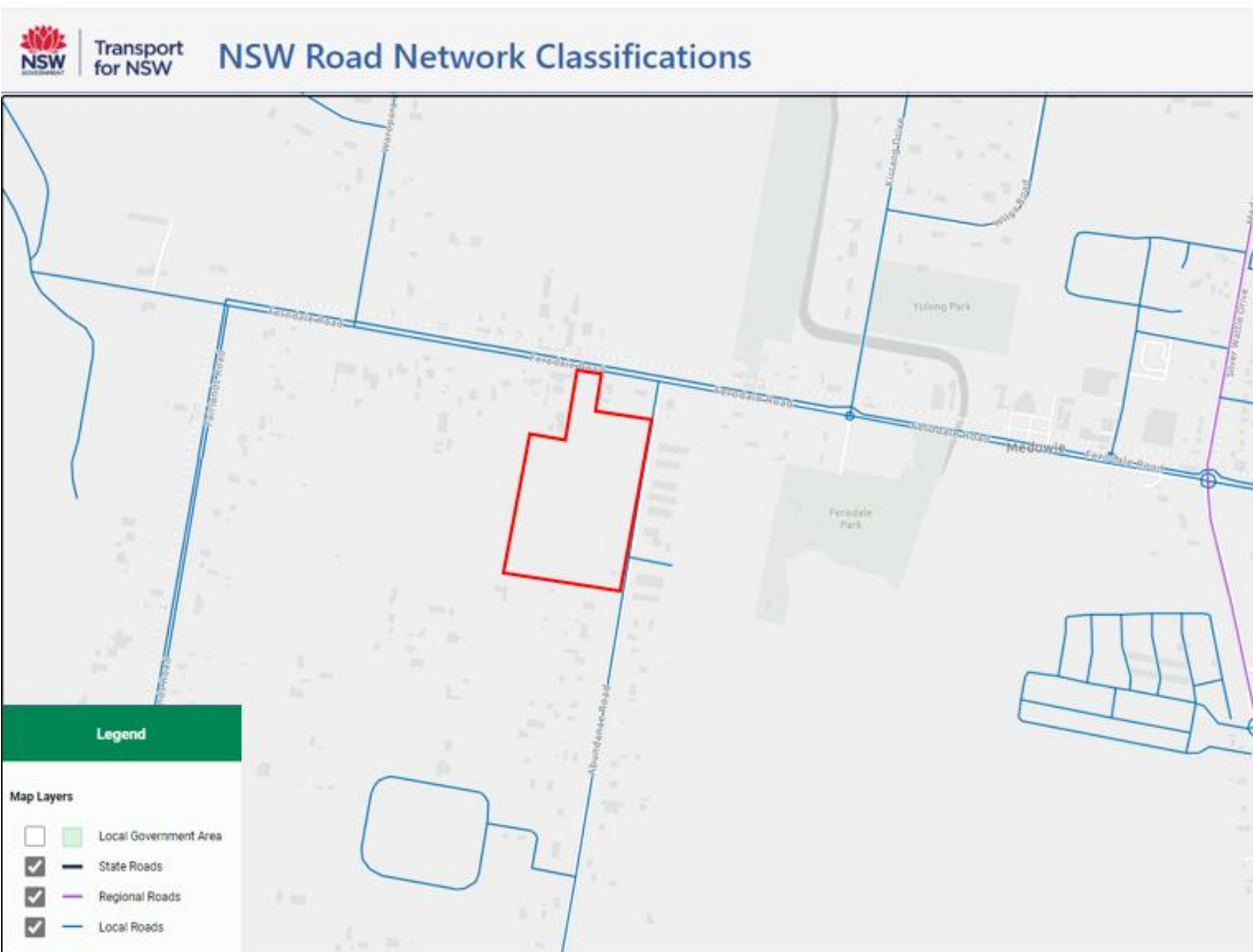


Figure 19 Road network classification (Source: TfNSW Road Network Classifications)

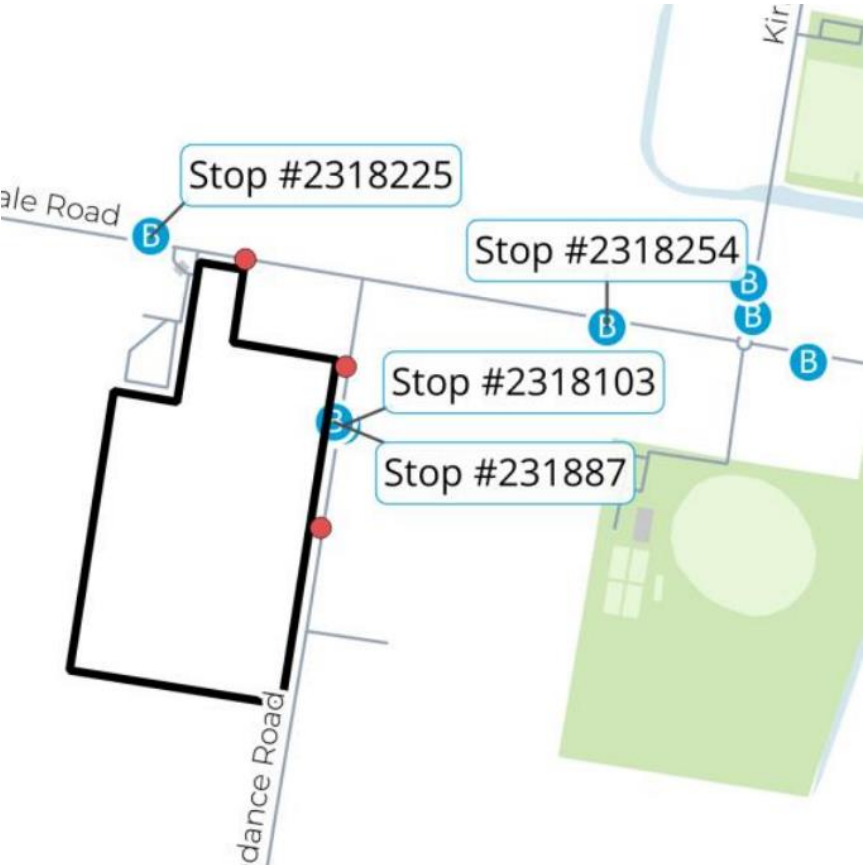


Figure 20 Location of bus stops in proximity to the site (Map source: WSP)

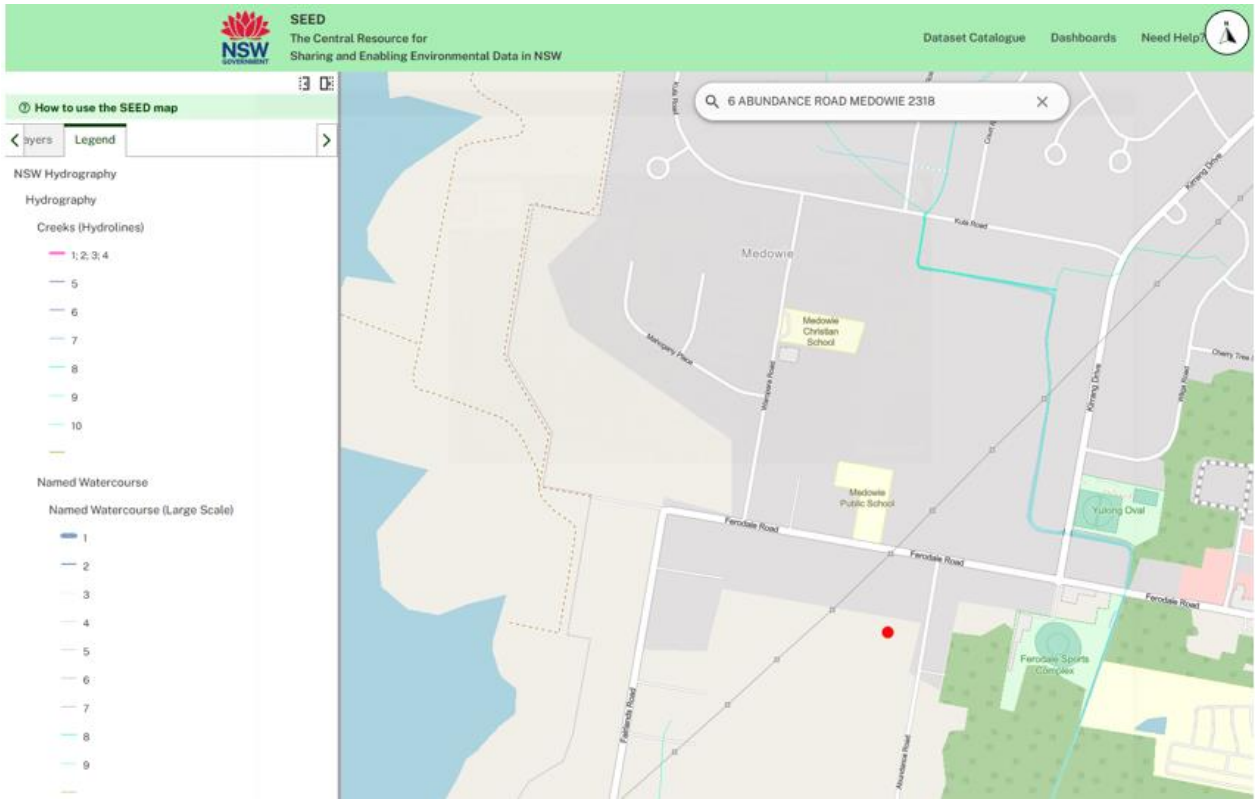


Figure 21 Hydrography Mapping (Source: SEED)